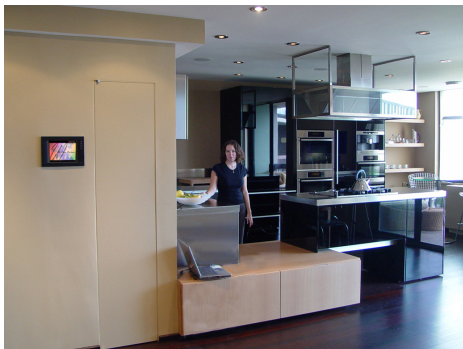


Symbiant

Home Automation Control Systems by Bri-Tech



Model **IAVX**
Automation and A/V
Controller for MDU's



Energy Savings



Home Music



Lighting Control



HVAC Integration



Touch Screen Control



Networking



Shade Control

Key Features

Single Button All Off
Lighting Themes
Remote HVAC Control
Six Audio Zones
iPod Integration
Video Distribution
Option

General Specifications

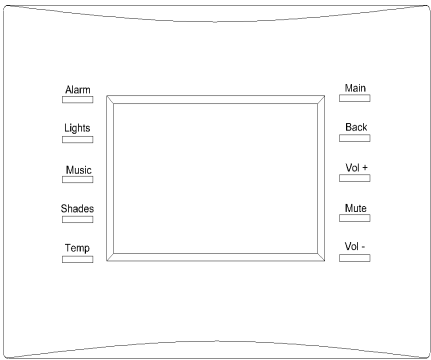
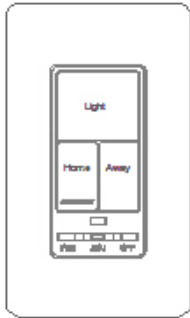
The Symbiant AVX represents the latest in a series of high performance future ready automaton systems by Bri-Tech. Lighting, HVAC, Shades and Music are all under Symbiant's control. The system employs the best of breed internal components and sub-systems, and has a number of redundant circuits and the ability to communicate via e-mail and internet, to owners and property managers. Symbiant AVX is designed specifically for multi dwelling unit residences to have the maxim features in the smallest space. While built with the best components available the systems true power comes from Bri-Tech's custom software. Years in development by professional degreed programmers and continuously updated, this application is the industry's best.



The heart of the system is the Symbiant Control Center, designed to offer maximum flexibility in the smallest location.

Each Symbiant Control Center is pre assembled at Bri-Tech's manufacturing facility; It is then programmed and tested before installation.

- **Centralizes all systems into one organized and easy to service location**
- **Engineered to be upgradable for future technologies**
- **Multiple Centers can be linked for larger residences**
- **Bri-Tech's "Web Control" allows home to be managed remotely**

Touch Screen		Smart Switch	
	<p>Control all home systems from one simple keypad. Raise and lower shades, adjust thermostat schedules, select music from you I-pod and navigate its music lists right on screen. Control each room independently or control the whole residence at once.</p>		<p>Press (Away) when leaving and all your lights, music go off and the thermostats setback for energy savings. You can adjust the settings with the Control Keypad.</p> <p>Press (Home) when returning and your residence goes to the presets you determined, lights on, preset temp and play music.</p>

Specifications

Symbiant Controller	Connectivity Requirements	Internet Connection (required for external control) (service agreements required for remote log-in)
	Back-up Power	Temporary back-up power varies based on system load and number of touch screens, Controller back-up 2-4 hours
	Compatibility	Creston Control Systems, PC Windows and XP
	Warrantee	1 Year
	Operating temperature	Max 120deg , Min 30deg Fahrenheit,
	Physical Dimensions	42"H x 24"W x 6"D (may be recessed 3-1/2" in wall)
	Power Requirements	120VAC 10A (15A dedicated circuit recommended)
Controls	Touch Screen Smart Switch (3 Button)	Wall mounted Creston color touch screen running Symbiant 6.0 Automation software Installed by electrician and wired like a conventional switch, advance programming by a Bri-Tech certified technician during commissioning
Upgrading		Symbiant has been engineered to be scalable

Bri-Tech, Inc.
829 Lincoln Ave.
Bohemia, NY 11716

Main Office 631.563.8000
Hamptons 631.267.8900
Greenwich 203.340.2155



Technology in Tune with Life

bri-tech.com